

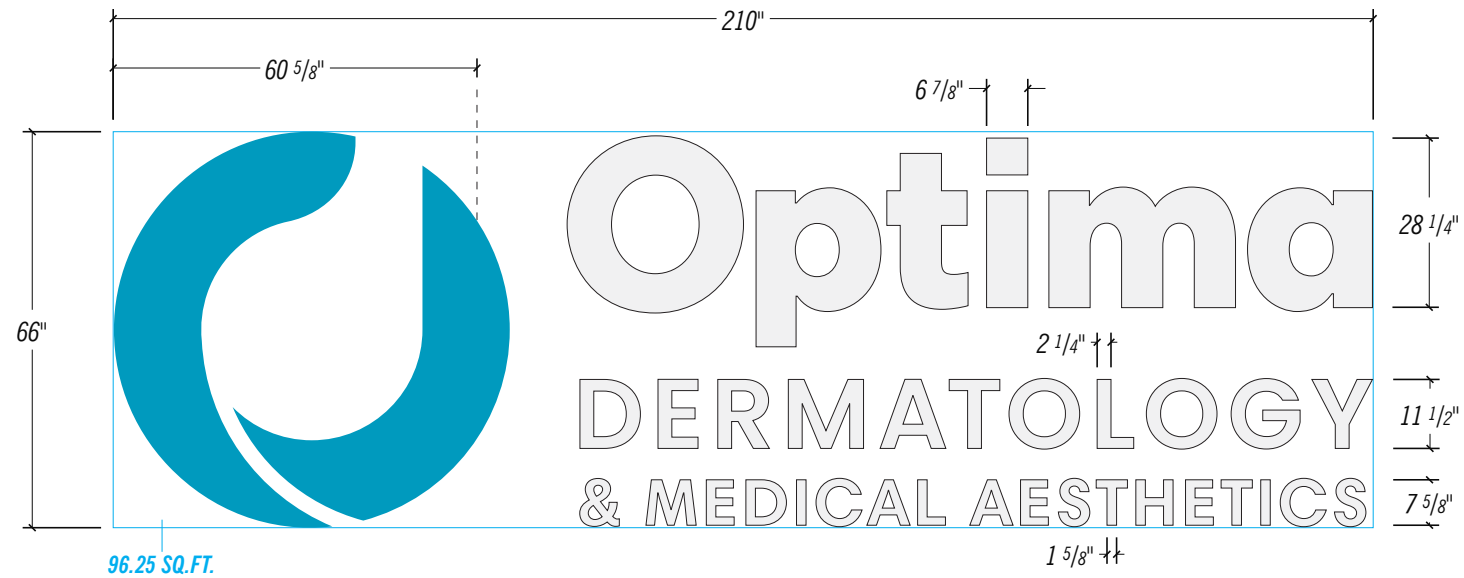
# CONCEPT DRAWING

THIS DRAWING IS FOR PRESENTATION PURPOSES ONLY  
CONTINGENT ON FIELD SURVEY, CITY AND LANDLORD APPROVAL.



SIGN INSTALL - EAST ELEVATION

Scale: 3/32"=1'-0"



ELEVATION | ST\_CH\_LTR (FLUSH MOUNTED)

Scale: 3/8"=1'-0"



SIDE VIEW

Scale: 3/8"=1'-0"

## ST | CH\_LTR FLUSH MOUNTED

### (A) FACE

- 5" DEEP WHITE RETURNS
- .1875" 7328 WHITE ACRYLIC FACES
- 1" WHITE TRIMCAP

### (B) LOGO

- 5" DEEP RETURNS
- PAINTED PER COLOR SPEC
- .1875" 2447 WHITE ACRYLIC FACES w/ APPLIED PURECOLOR DIGITAL PRINT w/ LAMINATE FINISH
- 1" TEAL TRIMCAP
- LOGO IS SELF CONTAINED

### INSTALL

- MECHANICALLY FASTENED TO EXTERIOR FACADE.
- BLOCKING PROVIDED BY OTHERS

### ILLUMINATION

- SLOAN PRISM 6500K - WHITE LED
- 212 MODS
- (6) 12V 60W SLOAN 60C2
- 100-277V POWER SUPPLY
- 6A @ 120V
- FINAL ELECTRICAL SUPPLY AND CONNECTION BY OTHERS

### COLOR SPEC(S)



Project:  
OPTIMA DERMATOLOGY  
- MACEDONIA

Designer: Josh  
Job Number: 129103-01  
Date: 10.04.21

Rev. 1:100621  
Rev. 2:102821  
Rev. 3:110221  
Rev. 4:110921  
Rev. 5:



archetype

9611 James Ave. S  
Minneapolis, Minnesota 55431

952 641 9600

[archetypesign.com](http://archetypesign.com)

Contact:  
Gary Stemler  
952 641 9603  
garys@archetypesign.com

This print is meant as a representation of a sign show in consideration of being manufactured by Archetype. Materials may influence final result. Samples available upon request. Graphic Design time is included in the total purchase price. Designs contained herein are not meant to be exhibited to others outside of included parties and employees. Designs received from Archetype may not be manufactured by others without reimbursement for time spent in the creation of these designs or any resemblance. Drawings may contain elements considered artistic intellectual property of Steve Carpenter, owner. ©Archetype

Approved:

Type | CH\_LTR

Description |  
FLUSH MOUNTED

# EAST ELEVATION

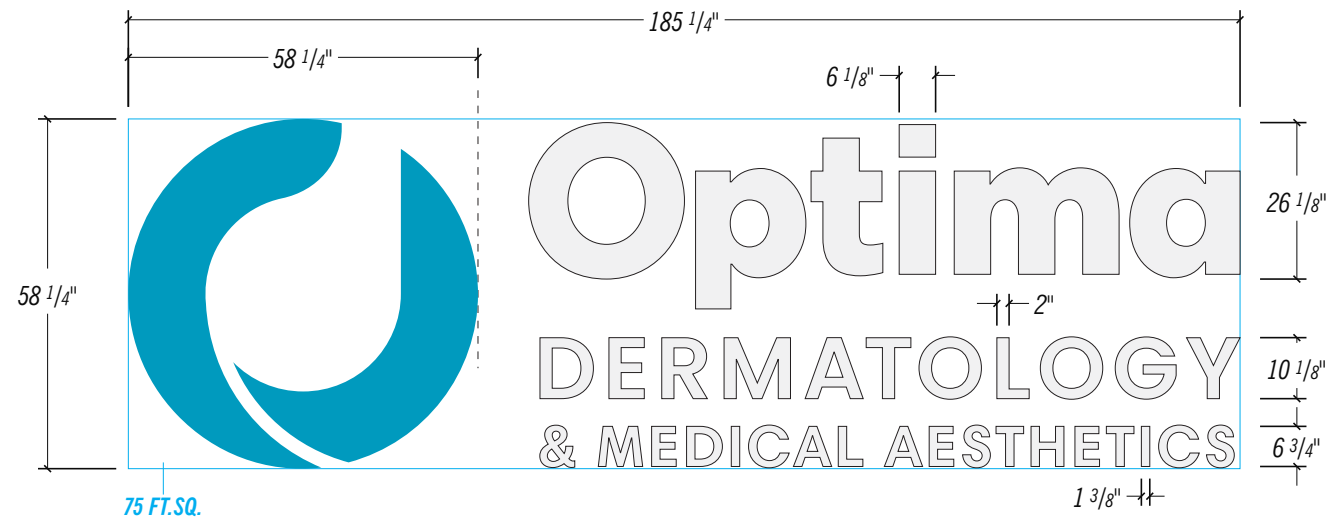
# CONCEPT DRAWING

THIS DRAWING IS FOR PRESENTATION PURPOSES ONLY  
CONTIGENT ON FIELD SURVEY, CITY AND LANDLORD APPROVAL.



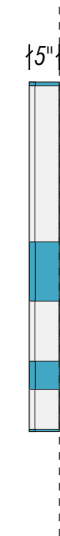
**SIGN INSTALL - WEST ELEVATION**

Scale: 3/32"=1'-0"



**ELEVATION | ST\_CH\_LTR (FLUSH MOUNTED )**

Scale: 3/8"=1'-0"



**SIDE VIEW**

Scale: 3/8"=1'-0"

**ST | CH\_LTR  
FLUSH MOUNTED**

**(A) FACE**

- 5" DEEP WHITE RETURNS
- .1875" 7328 WHITE ACRYLIC FACES
- 1" WHITE TRIMCAP

**(B) LOGO**

- 5" DEEP RETURNS
- PAINTED PER COLOR SPEC
- .1875" 2447 WHITE ACRYLIC FACES w/ APPLIED PURECOLOR DIGITAL PRINT w/ LAMINATE FINISH
- 1" TEAL TRIMCAP
- LOGO IS SELF CONTAINED

**INSTALL**

- MECHANICALLY FASTENED TO EXTERIOR FACADE.
- BLOCKING PROVIDED BY OTHERS

**ILLUMINATION**

- SLOAN PRISM 6500K - WHITE LED
- 128 MODS
- (3) 12V 60W SLOAN 60C2
- 100-277V POWER SUPPLY
- 3A @ 120V
- FINAL ELECTRICAL SUPPLY AND CONNECTION BY OTHERS

**COLOR SPEC(S)**



Project:  
**OPTIMA DERMATOLOGY  
- MACEDONIA**

Designer: **Josh**  
Job Number: **129103-02**  
Date: **10.04.21**

Rev. 1:100621  
Rev. 2:102821  
Rev. 3:110221  
Rev. 4:110921  
Rev. 5:



**archetype**

9611 James Ave. S  
Minneapolis, Minnesota 55431

952 641 9600

[archetypesign.com](http://archetypesign.com)

Contact:  
**Gary Stemler**  
**952 641 9603**  
[garys@archetypesign.com](mailto:garys@archetypesign.com)

This print is meant as a representation of a sign show in consideration of being manufactured by Archetype. Materials may influence final result. Samples available upon request. Graphic Design time is included in the total purchase price. Designs contained herein are not meant to be exhibited to others outside of included parties and employees. Designs received from Archetype may not be manufactured by others without reimbursement for time spent in the creation of these designs or any resemblance. Drawings may contain elements considered artistic intellectual property of Steve Carpenter, owner. ©Archetype

Approved:

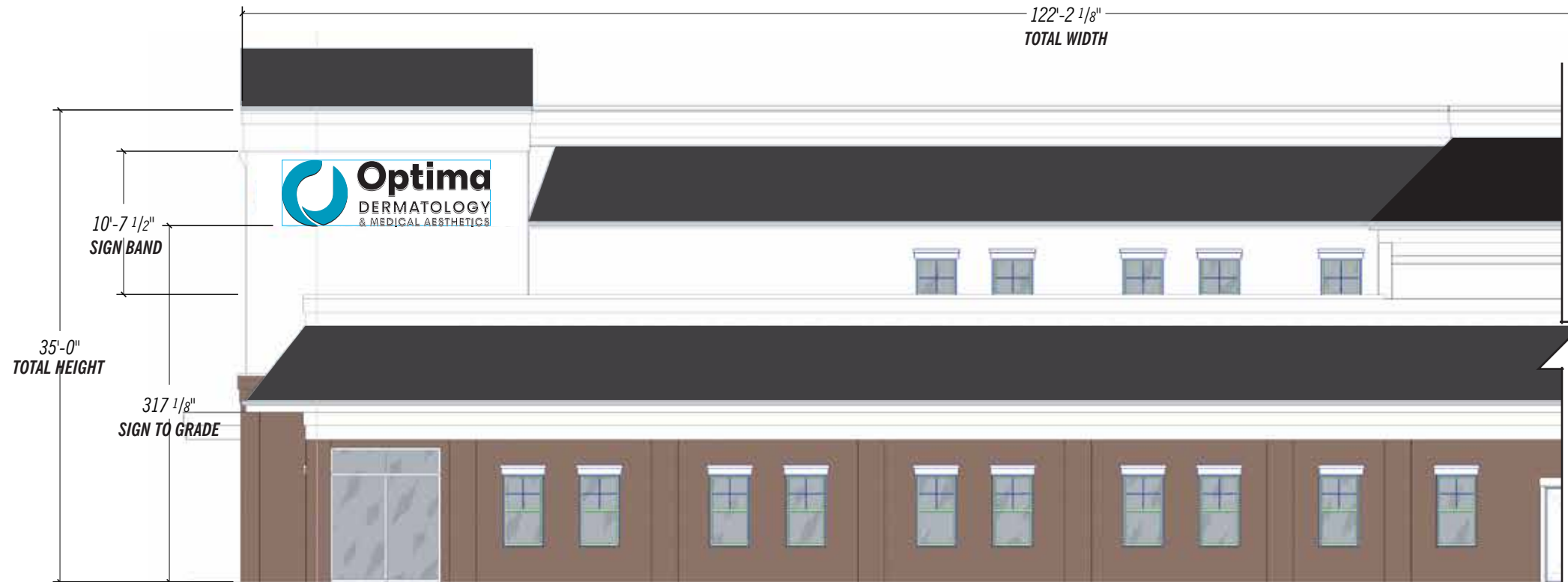
Type | CH\_LTR

Description |  
FLUSH MOUNTED

# WEST ELEVATION

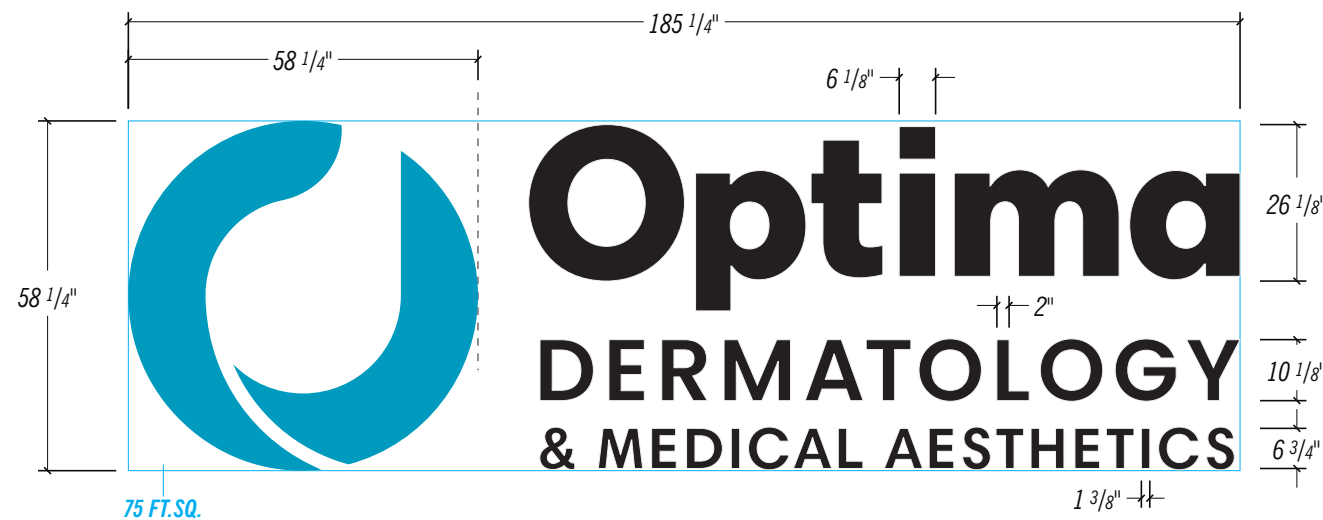
# CONCEPT DRAWING

THIS DRAWING IS FOR PRESENTATION PURPOSES ONLY  
CONTIGENT ON FIELD SURVEY, CITY AND LANDLORD APPROVAL.



SIGN INSTALL - NORTH ELEVATION

Scale: 3/32"=1'-0"



ELEVATION | ST\_CH\_LTR (FLUSH MOUNTED )

Scale: 3/8"=1'-0"

SIDE VIEW

Scale: 3/8"=1'-0"

## ST | CH\_LTR FLUSH MOUNTED

### (A) FACE

- 5" DEEP WHITE RETURNS
- .1875" 7328 WHITE ACRYLIC FACES
- 3M BLACK/WHITE PERF VINYL (BLACK/DAY - WHITE/NIGHT)
- 1" WHITE TRIMCAP

### (B) LOGO

- 5" DEEP RETURNS
- PAINTED PER COLOR SPEC
- .1875" 2447 WHITE ACRYLIC FACES w/ APPLIED PURECOLOR DIGITAL PRINT w/ LAMINATE FINISH
- 1" TEAL TRIMCAP
- LOGO IS SELF CONTAINED

### INSTALL

- MECHANICALLY FASTENED TO EXTERIOR FACADE.
- BLOCKING PROVIDED BY OTHERS

### ILLUMINATION

- SLOAN PRISM 6500K - WHITE LED
- 128 MODS
- (3) 12V 60W SLOAN 60C2 100-277V POWER SUPPLY
- 3A @ 120V
- FINAL ELECTRICAL SUPPLY AND CONNECTION BY OTHERS

### COLOR SPEC(S)



Project:  
OPTIMA DERMATOLOGY  
- MACEDONIA

Designer: Josh  
Job Number: 129103-03

Date: 10.04.21

Rev. 1:100621  
Rev. 2:102821  
Rev. 3:110221  
Rev. 4:  
Rev. 5:



archetype

9611 James Ave. S  
Minneapolis, Minnesota 55431

952 641 9600

[archetypesign.com](http://archetypesign.com)

Contact:  
Gary Stemler  
952 641 9603  
garys@archetypesign.com

This print is meant as a representation of a sign show in consideration of being manufactured by Archetype. Materials may influence final result. Samples available upon request. Graphic Design time is included in the total purchase price. Designs contained herein are not meant to be exhibited to others outside of included parties and employees. Designs received from Archetype may not be manufactured by others without reimbursement for time spent in the creation of these designs or any resemblance. Drawings may contain elements considered artistic intellectual property of Steve Carpenter, owner. ©Archetype

Approved:

Type | CH\_LTR

Description |  
FLUSH MOUNTED

# NORTH ELEVATION

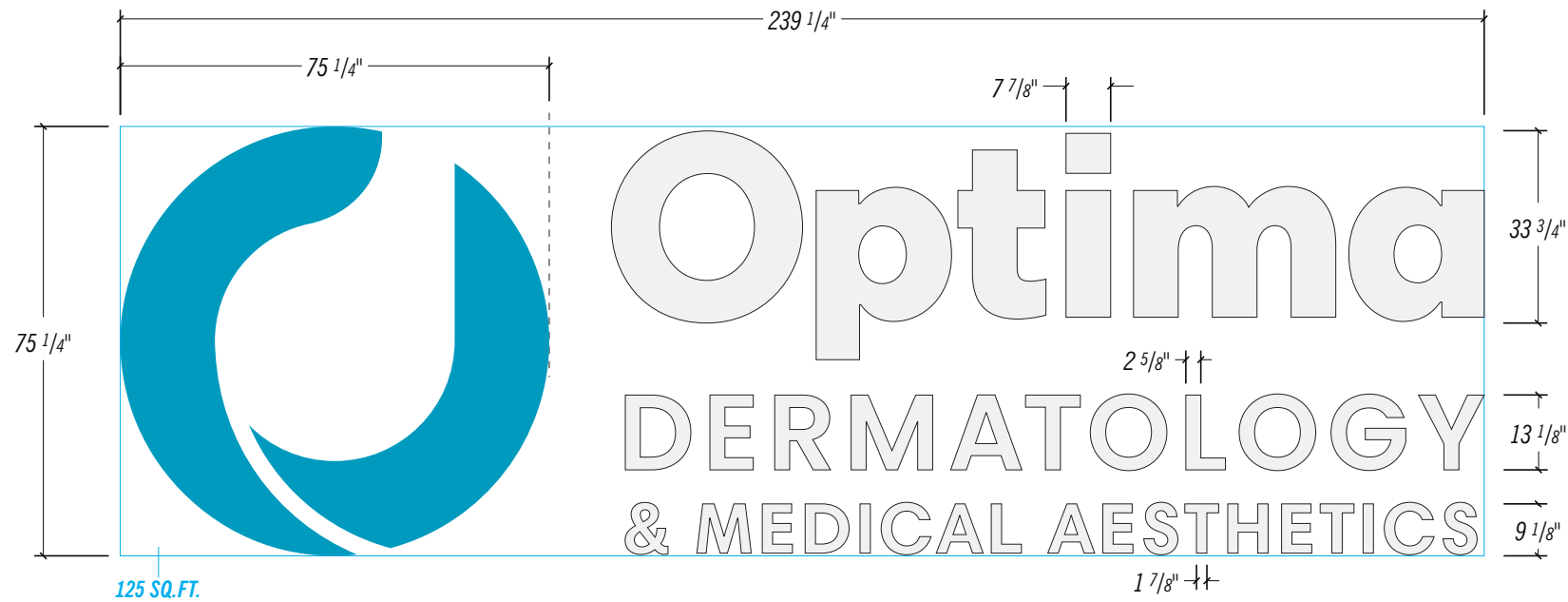
# CONCEPT DRAWING

THIS DRAWING IS FOR PRESENTATION PURPOSES ONLY  
CONTIGENT ON FIELD SURVEY, CITY AND LANDLORD APPROVAL.



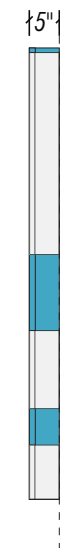
**SIGN INSTALL - SOUTH ELEVATION**

Scale: 3/32"=1'-0"



**ELEVATION | ST\_CH\_LTR (FLUSH MOUNTED)**

Scale: 3/8"=1'-0"



**SIDE VIEW**

Scale: 3/8"=1'-0"

## ST | CH\_LTR FLUSH MOUNTED

### (A) FACE

- 5" DEEP WHITE RETURNS
- .1875" 7328 WHITE ACRYLIC FACES
- 1" WHITE TRIMCAP

### (B) LOGO

- 5" DEEP RETURNS
- PAINTED PER COLOR SPEC
- .1875" 2447 WHITE ACRYLIC FACES w/ APPLIED PURECOLOR DIGITAL PRINT w/ LAMINATE FINISH
- 1" TEAL TRIMCAP
- LOGO IS SELF CONTAINED

### INSTALL

- MECHANICALLY FASTENED TO EXTERIOR FACADE.
- BLOCKING PROVIDED BY OTHERS

### ILLUMINATION

- SLOAN PRISM 6500K - WHITE LED
- 212 MODS
- (6) 12V 60W SLOAN 60C2
- 100-277V POWER SUPPLY
- 6A @ 120V
- FINAL ELECTRICAL SUPPLY AND CONNECTION BY OTHERS

### COLOR SPEC(S)



Project:  
**OPTIMA DERMATOLOGY  
- MACEDONIA**

Designer: **Josh**  
Job Number: **129103-04**  
Date: **10.04.21**

Rev. 1:100621  
Rev. 2:102821  
Rev. 3:110221  
Rev. 4:110921  
Rev. 5:



**archetype**

9611 James Ave. S  
Minneapolis, Minnesota 55431

952 641 9600

[archetypesign.com](http://archetypesign.com)

Contact:  
**Gary Stemler**  
952 641 9603  
[garys@archetypesign.com](mailto:garys@archetypesign.com)

This print is meant as a representation of a sign show in consideration of being manufactured by Archetype. Materials may influence final result. Samples available upon request. Graphic Design time is included in the total purchase price. Designs contained herein are not meant to be exhibited to others outside of included parties and employees. Designs received from Archetype may not be manufactured by others without reimbursement for time spent in the creation of these designs or any resemblance. Drawings may contain elements considered artistic intellectual property of Steve Carpenter, owner. ©Archetype

Approved:

Type | CH\_LTR

Description |  
FLUSH MOUNTED

# SOUTH ELEVATION

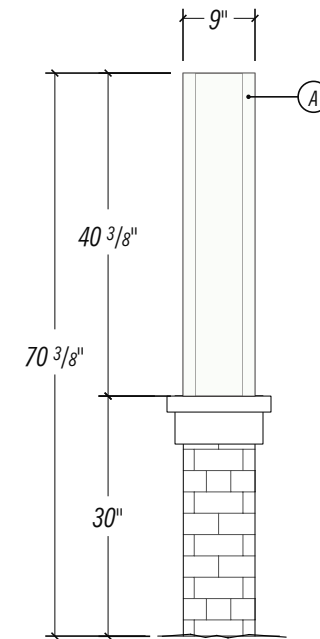
# CONCEPT DRAWING

THIS DRAWING IS FOR PRESENTATION PURPOSES ONLY  
CONTINGENT ON FIELD SURVEY, CITY AND LANDLORD APPROVAL.



ELEVATION | ST\_MON\_ID (D/F - ILLUM - MONUMENT)

Scale: 1/2"=1'-0"



SIDE VIEW

Scale: 3/8"=1'-0"

ST | MON\_ID  
D/F - ILLUM - MONUMENT

## A CABINET

- FABRICATED FROM:
- .125" ALUM. 5052 SHEET - CNC
  - 2"X2"X.1875" ALUM. STRUC ANGLE
  - DOUBLE FACE CABINET
  - 2" RETAINERS
  - PAINTED PER COLOR SPEC

## B FACES

- .1875" 2447 WHITE ACRYLIC FACES w/ APPLIED PURECOLOR DIGITAL PRINT w/ LAMINATE FINISH
- 220-22 MATTE BLACK VINYL
- PLOT CUT 1ST SURFACE

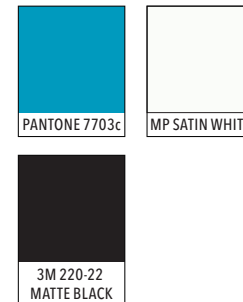
## INSTALL

- ANCHOR BOLT BASE PLATE MOUNT

## ILLUMINATION

- SLOAN PRISM 6500K - WHITE
- 120 LED MOD (60 PER SIDE)
- (3) 12V 60W SLOAN 60C2
- 100-277V POWER SUPPLY
- 3A @ 120V
- WATTS / LOAD - 168W USED
- PHOTOCELL CONTROLLER
- FINAL ELECTRICAL SUPPLY AND CONNECTION BY OTHERS

## COLOR SPEC(S)



Project:  
OPTIMA DERMATOLOGY  
- MACEDONIA

Designer: Josh  
Job Number: 129103-05

Date: 10.04.21

Rev. 1:102821

Rev. 2:

Rev. 3:

Rev. 4:

Rev. 5:



archetype

9611 James Ave. S  
Minneapolis, Minnesota 55431

952 641 9600

archetypesign.com

Contact:  
Gary Stemler  
952 641 9603  
garys@archetypesign.com

This print is meant as a representation of a sign show in consideration of being manufactured by Archetype. Materials may influence final result. Samples available upon request. Graphic Design time is included in the total purchase price. Designs contained herein are not meant to be exhibited to others outside of included parties and employees. Designs received from Archetype may not be manufactured by others without reimbursement for time spent in the creation of these designs or any resemblance. Drawings may contain elements considered artistic intellectual property of Steve Carpenter, owner. ©Archetype

Approved:

Type | MON\_ID

Description |  
D/F - ILLUM - MON

# MONUMENT ID